



**SOLUTION ONE**  
*Life ∞...*

## Solutions for Advancing **Life Sciences and Healthcare**

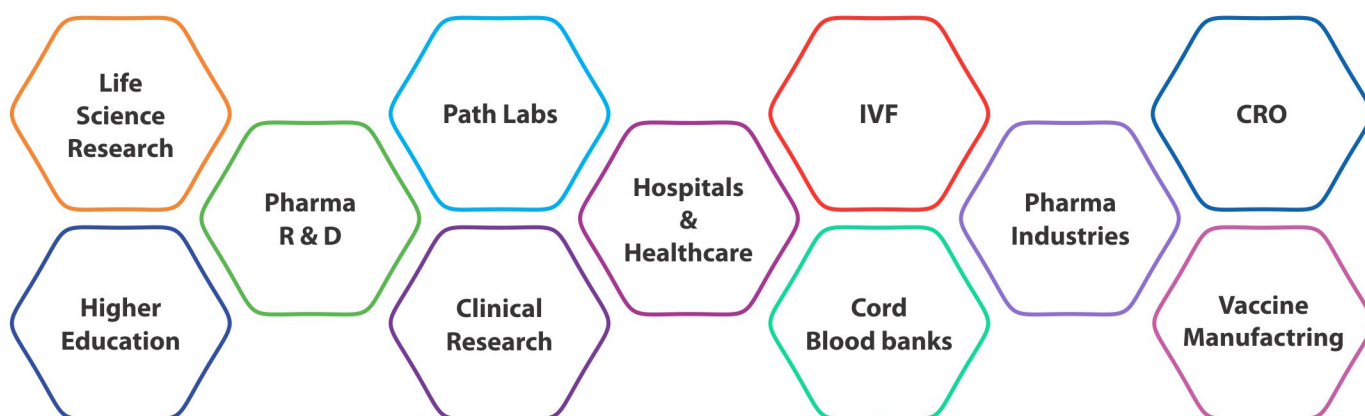




**Solution One** was established in 2005, with focus on providing solutions for advancing Scientific outcomes and enhancing diagnostic /Healthcare capabilities.

Equipped with a comprehensive product portfolio and alliances with leading industry manufacturers, we cater to the full spectrum of customers involved in **DISCOVERY, DIAGNOSIS & DELIVERY** with high quality and reliable products and solutions.

Our products span the entire range of laboratory equipment and consumables for Basic and life sciences research, Higher education, Clinical diagnostics, Healthcare setups, and Industries.



Solution One is headed and managed by astute professionals possessing in depth know-how in the fields of Life sciences and Clinical Diagnostics assisted by a proficient and experienced team of sales and operational specialists.



Scan to browse  
our website

We operate from our offices in Delhi, Lucknow, Chandigarh, and cater to customers in PAN INDIA through our channels & partners.

With our strength of Customer centricity and reliable services, we look forward for Researchers and Clinicians from across the field of Life Sciences and healthcare to patronage our services.

#### OUR PRINCIPAL COMPANIES:

**ThermoFisher**  
SCIENTIFIC



 **Seegene**



**FALCON**<sup>®</sup>  
A Corning Brand

**invitrogen**  
by Thermo Fisher Scientific

  
**PerkinElmer**<sup>®</sup>  
For the Better

**CEDARLANE**<sup>®</sup> 

**DUAB**



## ANTIBODIES

**BD Biosciences** provides flow cytometers, reagents, tools and a wide range of services to support the work of researchers and clinicians who understand disease and improve care.

### BD ANTIBODIES helps you to...



Design



Analyze



Sort



Explore



Discover

...your Clinical & Research Flow needs.

#### RESEARCH Applications:

- Multi-color Flow cytometry
- T-cell Immunology
- B-cell Research
- Apoptosis
- Cell cycle Analysis
- Cytometric Bead array
- ELISA & Western Blot
- Stem cell Research
- Clinical Research

#### CLINICAL Applications:

- Leukemia & Lymphoma
- MRD
- HIV-CD4
- HLA B27
- Cord Blood Banking
- PID & Sepsis
- PNH
- Leuco Count
- Retic Count

#### DID YOU KNOW !

BD Biosciences offers the largest range of **Brilliant™ Dyes** antibodies at an affordable price range

#### DID YOU KNOW !

BD Biosciences NOW offers **Opti-Build™** Custom Conjugated antibodies to suit all your research requirement

## BD Flow reagents

BD FACS Flow sheath fluid  
BD FACS Clean solution  
BD FACS Rinse solution  
BD FACS Shutdown solution  
Calibration Beads and Buffers

- BD CST beads
- BD FACS 7 Colour Setup beads
- BD Calibrite beads



## BD Flow cytometers:

BD Accuri™ C6 Plus  
BD FACS Lyric™  
BD FACS Verse™  
BD FACS Melody™  
BD FACS Aria™ Fusion  
BD FACS Symphony™  
BD LSRFortessa™ / X-20

### BD Rhapsody™



A Single Cell Analysis System

NOTE: We also offer **Flow Tubes**, look for them under CORNING Falcon





# ThermoFisher SCIENTIFIC

## LIQUID HANDLING

**Thermo Fisher's** Industry-leading pipetting systems for any application: Meet the demands of daily pipetting with Thermo Scientific™ pipette and tip systems. Improve accuracy and precision with pipetting systems that incorporate years of experience and innovation for consistent, reproducible results.



FINNPIPETTE

### Pipettes and pipette tips selection

Single Channel • Multi channel • Electronic

Variable Volume Single channel (0.2µl to 10ml) | Fixed Volume Single channel (1µl to 10ml)



F1 Pipettes



F2 Pipettes



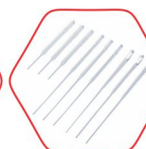
F3 Pipettes



Electronic  
Pipettes



Pipet Filler



Pasteur  
pipettes

A broad range of standard and filter pipette tips in specialty options such as low retention, extended length, gel loading or new ClipTip™ technology.



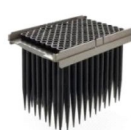
Fintip Pipette Tips



ART Filter Tips



Specialized Tips



FinnpiPETTE™ F1 Good  
Laboratory Pipetting (GLP) Kits



### DID YOU KNOW!

Thermo Scientific F1-ClipTip™ Pipetting System the attachment of tips is accomplished with an interlock technology between pipette and tip.



Nitrile Gloves



Purple Nitrile Gloves



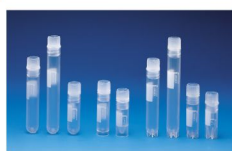
Ask for F1 and F2  
GLP Kits which  
are available in  
various volume  
combinations



Nalgene Syringe  
Filters (Sterile &  
Non sterile)



The Nunc MaxiSorp high  
protein-binding capacity  
96 well ELISA plates



Nunc™ Bio-banking and  
Cell Culture  
Cryogenic Tubes



Multidrop Pico 1 and Pico 8 offers enhanced dispensing precision with volume as low as 11µL. Ideal for a broad array of low-volume applications such as qPCR, dose response curves, drug screening assays and ELISA.



Thermo Scientific  
Nuova Hotplates,  
Stirring Hotplates  
& Stirrers



Thermo Scientific  
Digital Dry Bath /  
Block Heater



Thermo Scientific  
Thermal Mixer



Thermo Scientific™ Owl™  
Horizontal & Vertical Gel  
Electrophoresis



For every step in your journey to discovery, there are **Invitrogen** solutions to take you further, faster.

## Media, Antibiotics & Supplements

**GIBCO**



FBS



DMEM



TRYPSIN



RPMI



B-27  
Supplement



Penicillin -  
Streptomycin



Amphotericin -  
B

**AB** (Formerly BD AB)  
(Advance Bio Processing)  
Peptone (Animal Origin)  
Peptone (Animal Free)  
Tryptone, Yeast extract  
Casamino acid, Biosate  
Peptone



## KITS & Reagents



SuperScript™ III  
Reverse  
Transcriptase



cDNA Synthesis Kit



SuperScript™  
Choice System  
for cDNA  
Synthesis



GeneJET Viral  
DNA/RNA  
Purification Kit



TaqPath™ 1-Step  
Multiplex  
Master Mix



BigDye™  
Terminator  
Sequencing Kit



Nuclease-Free  
Water



PageRuler™  
Plus Prestained  
Protein Ladder



Thermo Fisher  
Scientific™  
Primary and  
Secondary  
Antibodies



Transfection  
Reagents

## Cell Counters



Countess™ II



Countess™ Cell  
Counting Chamber Slides



QUBIT 4 & QUBIT  
FLEX Fluorometer

## Western Blot Transfer System



SureCast™  
Gel Handcast Bundle



Power Blotter



IBlot



Power Snap



S.N.A.P.™  
Gel Purification Kit

## Western Blot Imaging Systems



Ibriht CI750, CL1500,  
FL1500 Imaging System



E-Gel Imager-The  
Compact Gel Imaging System



Dual LED Blue/White  
Light Transilluminator



Western blotting  
consumables

## Next Gen Sequencing



Ion S5™ Next Gen  
Sequencing System



3500 Series Genetic Analyzer



SeqStudio Genetic Analyzer

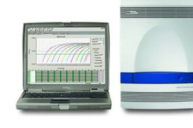
NGS Consumables & Kits



## THERMAL CYCLER RTPCR & Consumables



Quant Studio 5, 6 & 7



ABI 7500/ 7500 Dx



ProFlex™  
PCR System



MicroAmp™ Fast  
Optical 96-Well Plate



PowerUp™ SYBR™  
Green Master Mix



Thin-walled RNase-  
free PCR tubes



Veriti™ 96 & 384-Well  
Thermal Cycler

## Nucleic acid purification system



Kingfisher automated  
RNA DNA  
extraction System



MagMAX™  
CORE Nucleic  
Acid Purification  
Kit



MagMAX™  
Viral/Pathogen  
Nucleic Acid  
Isolation Kit

## Microplate Reader & Washer



Multiskan Sky  
Microplate  
Spectrophotometer



Multiskan FC



Wellwash

## EVOS Cell Imaging Systems



EVOS M7000



EVOS M5000





## Molecular Diagnostics

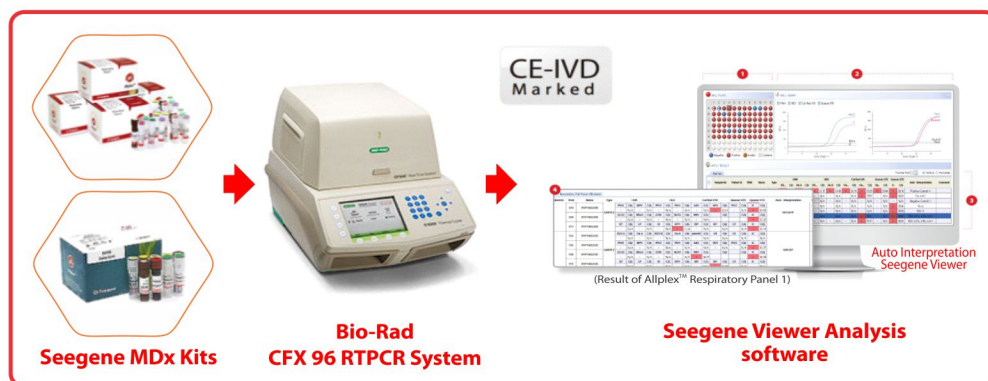
**Seegene's simultaneous and multiple detection technology** for the simultaneous detection and quantification of multiple pathogens are unique and superior, have already surpassed the limits of conventional diagnostic techniques. Using this technology, one can simultaneously identify causative pathogens of various infectious diseases even in multiple infections, genetic variants and degree of infection, which are very useful for monitoring and management of patients' conditions

**Seegene Introduced Automated Development of in silico-based Multiplex Real-time PCR Assays and developed world's first multiplex MDx assays with its AI system**



### DID YOU KNOW !

SEEGENE is the world leader in providing Multiplexing MDx kits with proprietary DPO™, TOCE™ & MUDT™ technologies which enables one to screen upto 10 to 12 targets in a single tube /sample.



## Complete solution for COVID-19 RT-PCR Detection

### Full Screening for SARS-CoV-2 and Novel Variants

- Multiplex real-time PCR testing in one tube
- Automated solution
- Reporting individual Ct value of multiple targets
- Variant surveillance
- Allplex™ 2019-nCoV Assay
- Allplex™ SARS-CoV-2 Master Assay
- Allplex™ SARS-CoV-2 Variants I Assay
- Allplex™ SARS-CoV-2 Assay



### Magicplex™ Kits

#### Sepsis Real-time Test

Comprehensive assay for the detection and identification of more than 90 sepsis causing pathogens

- Magicplex™ Sepsis Amplification
- Magicplex™ Sepsis Screening RT Detection
- Magicplex™ Sepsis ID 1~9 RT Detection

Amplification	Screening	Identification
<b>1</b> Amplicon Bank 1. Gram (+) bacteria / DR  73 Gram (+) bacteria 3 Drug resistance markers	<b>1</b> Gram (+) bacteria Screening 40 <i>Streptococcus</i> spp. 3 <i>Enterococcus</i> spp. 30 <i>Staphylococcus</i> spp.  <b>2</b> Drug Resistance (DR) Screening <i>vanA</i> <i>vanB</i> <i>mecA</i>	ID1 <i>S. agalactiae</i> <i>S. pyogenes</i> <i>S. pneumoniae</i> ID2 <i>E. faecalis</i> <i>E. gallinarum</i> <i>E. faecium</i> ID3 <i>S. epidermidis</i> <i>S. haemolyticus</i> <i>S. aureus</i>
<b>2</b> Amplicon Bank 2. Gram (-) bacteria / Fungi  12 Gram (-) bacteria / 6 Fungi	<b>3</b> Gram (-) bacteria / Fungi Screening  6 Gram (-) bacteria-A 6 Gram (-) bacteria-B 6 Fungi	ID4 <i>P. aeruginosa</i> <i>A. baumannii</i> <i>S. maltophilia</i> ID5 <i>S. marcescens</i> <i>B. fragilis</i> <i>S. typhi</i> ID6 <i>K. pneumoniae</i> <i>K. oxytoca</i> <i>P. mirabilis</i> ID7 <i>E. coli</i> <i>E. cloacae</i> <i>E. aerogenes</i> ID8 <i>C. albicans</i> <i>C. tropicalis</i> <i>C. parapsilosis</i> ID9 <i>C. glabrata</i> <i>C. krusei</i> <i>A. fumigatus</i>





### Allplex™ Kits

#### Respiratory Panels

- Allplex™ Respiratory Panel 1
- Allplex™ Respiratory Panel 2
- Allplex™ Respiratory Panel 3
- Allplex™ Respiratory Panel 4

#### STI Detection Panels

- Allplex™ STI Essential Assay
- Allplex™ Bacterial Vaginosis Assay
- Allplex™ Candidiasis Assay
- Allplex™ Genital ulcer Assay

### Anyplex™ Kits

#### HPV Detection Panels

- Anyplex™ II HPV28 Detection
- Anyplex™ II HPV HR Detection

#### TB Detection Panels

- Anyplex™ II MTB/MDR Detection
- Anyplex™ II MTB/XDR Detection
- Anyplex™ MTB/NTM Real-time Detection

### Other MDx Assays

#### INFECTIOUS DISEASES Screening and Detection

- HBV RTPCR kit
- HCV RTPCR kit
- HIV RTPCR kit
- CMV RTPCR kit
- HCV Genotyping kit
- HSV1&2 Detection kit
- Chickungunya RTPCR kit
- Dengue Screening kit
- Malaria Screening kit
- Rubella RTPCR kit
- More to come...

#### CANCER SCREENING & Detection Kits

- JAK 2
- PML RARA(bcr1/3)
- BRAF
- EGRF
- KRAS
- HER2
- ALK Fusion

#### VET SCREENING kits

- Species Identification (Cow/ Buffalo/ Peacock/ Pork)
- Sex determination (Cow/ Bullock)

#### GMO & FOOD TESTING kit

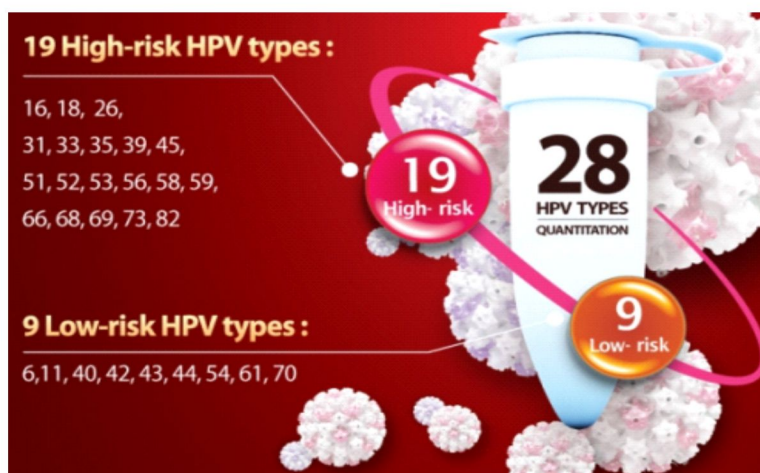
- GMO Screening (Rice/ Maize/ Soya/ Cotton)
- Pathogen detection (E. Coli/Listeria/ Pseudomonas / Salmonella/ etc)

#### Others

- Anyplex™ II Thrombosis SNP Panel Assay
- MERS-CoV Real Time Detection kit
- Novaplex™ Beta Thalassemia Kit (13 mutations)
- Anyplex™ BRAF V600E RT Detection

#### Drug Resistance

- Allplex™ Entero-DR Assay
- Anyplex™ VanR Real-time Detection







**FALCON®**  
A Corning Brand



## PLASTICWARE

### Falcon® Brand Products

Known for the popular "**Falcon Tubes**", the Falcon brand has set the standard for high-quality disposable plastic ware for more than 50 years. Falcon-branded liquid handling and cell culture products are designed to advance research and are used in laboratories worldwide. Manufactured from advanced bioanalytical grade resins and extensively tested, Falcon plastic ware ensures high quality and consistent, reliable results.



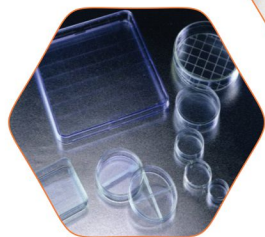
**FACS/FALCON Tubes**  
(5ml / 14 ml Tubes)



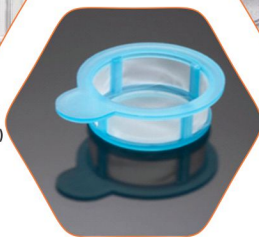
**Cell Culture Flasks**  
(25/75/150/175/225 cm<sup>2</sup>)



**Conical Tubes**  
(15 & 50 ml)



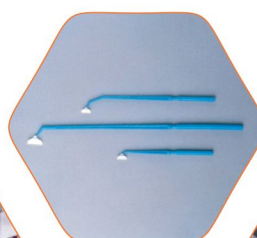
**IVF Plasticware**  
(Culture Tube, Culture Dish)



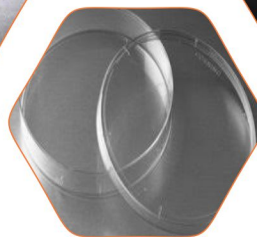
**Cell Strainers**



**Serological Pipets**  
(1/2/5/10/25/50 ml)



**Cell scrapers**



**Dishes & Petri Plates**  
(100 mm & 90/100 mm)



**Multi well plates**  
4 well, 6 well, 12 well,  
24 well, 48 well & 96 well

### DID YOU KNOW !

**FALCON IVF Plasticware** are Nonembryotoxic & Nonpyrogenic tested to less than 0.1 EU/mL or 5 EU/device. They are tissue culture-treated for a consistent hydrophilic surface.

### DID YOU KNOW !

**FALCON Primaria™** cell cultureware have Unique nitrogen-containing tissue culture surface chemistry which Improves attachment, spreading, and growth for many primary cells or cell lines.

## BIOLOGICALS

### The Right Surface for Every Cell

Corning's history in cell culture surfaces extends back more than 100 years. Since then numerous new surface technologies were introduced including Matrigel® matrix, BioCoat™ pre-coated culture ware, and synthetic ECM mimetic peptides.



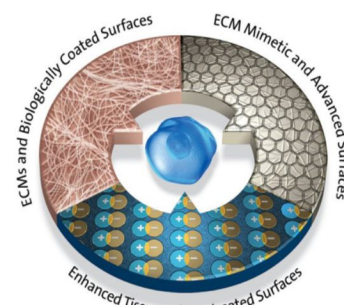
**Biocoat™**



**Matrigel®**



**Gentest™ Human Cryo Hepatocytes**



**Improve cell culture success with Corning® ECM surfaces.**





## BLOOD CULTURE & IDENTIFICATION

**BD Diagnostics** focuses on improving health outcomes for patients by providing laboratories with solutions that improve quality, enhance laboratory system productivity and inform medical decisions.

**BD Phoenix™** automated identification and susceptibility testing system



Broth and Reagents



identification & susceptibility  
combo panels



susceptibility & Identification panels  
(PMIC/ NMIC/SMIC & NID/PID Panels)



**BD BACTEC™ FX** blood culture system



**BD BACTEC™ resin media**  
Plus Aerobic medium Plus  
Anaerobic medium  
Peds Plus™ Medium

**MGIT Sire kit,**  
MGIT supplements  
MGIT 7 ml tubes



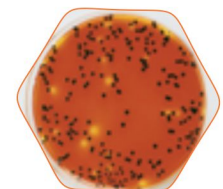
### DID YOU KNOW !

BD Bactec™ Blood Culture solutions  
are considered GOLD Standard

## MEDIA AND SUPPLEMENTS

### BD DIFCO

Dehydrated culture media  
Antibiotic disk  
Prepared culture plates  
Gas pack



## BLOOD COLLECTION



BD Vacutainer®

Paxgene Tubes

### DID YOU KNOW !

BD offers growth media backed  
by more than  
180 years of combined BD  
Difco™ and BD BBL™  
expertise. BD is the inventor of  
BD Vacutainer®  
blood collection tubes



**Roche**



## ROCHE INSTRUMENT & CONSUMABLES



MagNA Pure 96 System  
1-96 samples in one hour

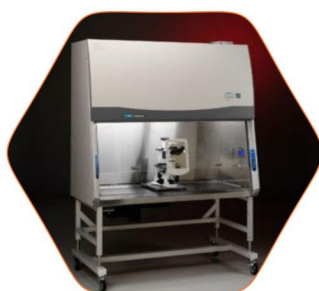


MagNA Pure 24 System  
1-24 samples in 70 min



Magna Pure Consumables & Other Kits

## LAB EQUIPMENTS (OTHER BRANDS)



Biosafety Cabinets



Laminar Flow



High speed Centrifuge



Vacuum concentrator



Weighing Balance



Freeze Dryers



Liquid Nitrogen containers

## CONSUMABLES (OTHER BRANDS)

**CEDARLANE®**



**FLAER**  
(Alexa 488 Proaerolysin variant)

**MP Biomedicals™**  
Speciality RARE Chemicals





## LAB EQUIPMENTS

**DLAB Scientific is the US-company part of a leading manufacturer** for laboratory equipments since 2002, **providing a one-stop solution in Lab equipments** with certified quality and competitive prices. Products are designed, manufactured and certified in accordance to ISO9001 / 13485 and cTUVs in their own facilities.

### Centrifuges



**Mini Centrifuge**  
(7000/10000 rpm)



**Clinical Centrifuge**  
(4500 RPM)



**Centrifuge**  
(15000 RPM)



**Cold Centrifuge**  
(15000 RPM)



Centrifuge Accessories

### Shakers



**Orbital Shaker**



**Rocker Shaker**



**3 D Shaker**



**Linear Shaker**



**Vortex shaker**

### Mixers & Rotators



**Digital Tube Rotators- Linear/ round**



**Digital Rotators**



**Tube roller**

### Magnetic Stirrers



**Magnetic Stirrer with Hot plate**



**Over head stirrers**



**Magnetic Stirrer**

### Heating Blocks



**High Capacity Thermo Control, for Eppendroff tubes/ 96 well plates/ 8 x12 PCR plates**



# SOLUTION ONE

*Life ∝ ...*

## DELHI HEAD OFFICE

C-143, Second floor,  
Naraina Industrial Area, Phase 1,  
Naraina, New Delhi-110028

Telephone: +91-11-45525852, 49868533

E-mail: soluone@gmail.com, info@solone.in

Visit us: [www.solone.in](http://www.solone.in)



Registered with MSME



Look for our Products in GEM

## CHANDIGARH BRANCH

Shop No. 12,  
Sarpanch Shopping Complex  
Sector-41 D, Chandigarh - 160036

## LUCKNOW BRANCH

House No. LIG-148,  
Ground Floor, Near SBI ATM,  
Jankipuram, Lucknow (U.P)



Scan to browse  
our website

All Logo and Trademarks included in this document are the property of their respective owners.

Disclaimer: Images used on BD pages in this brochure are either taken from actual products available with us or from 3rd party websites.

Solone 2021-22